

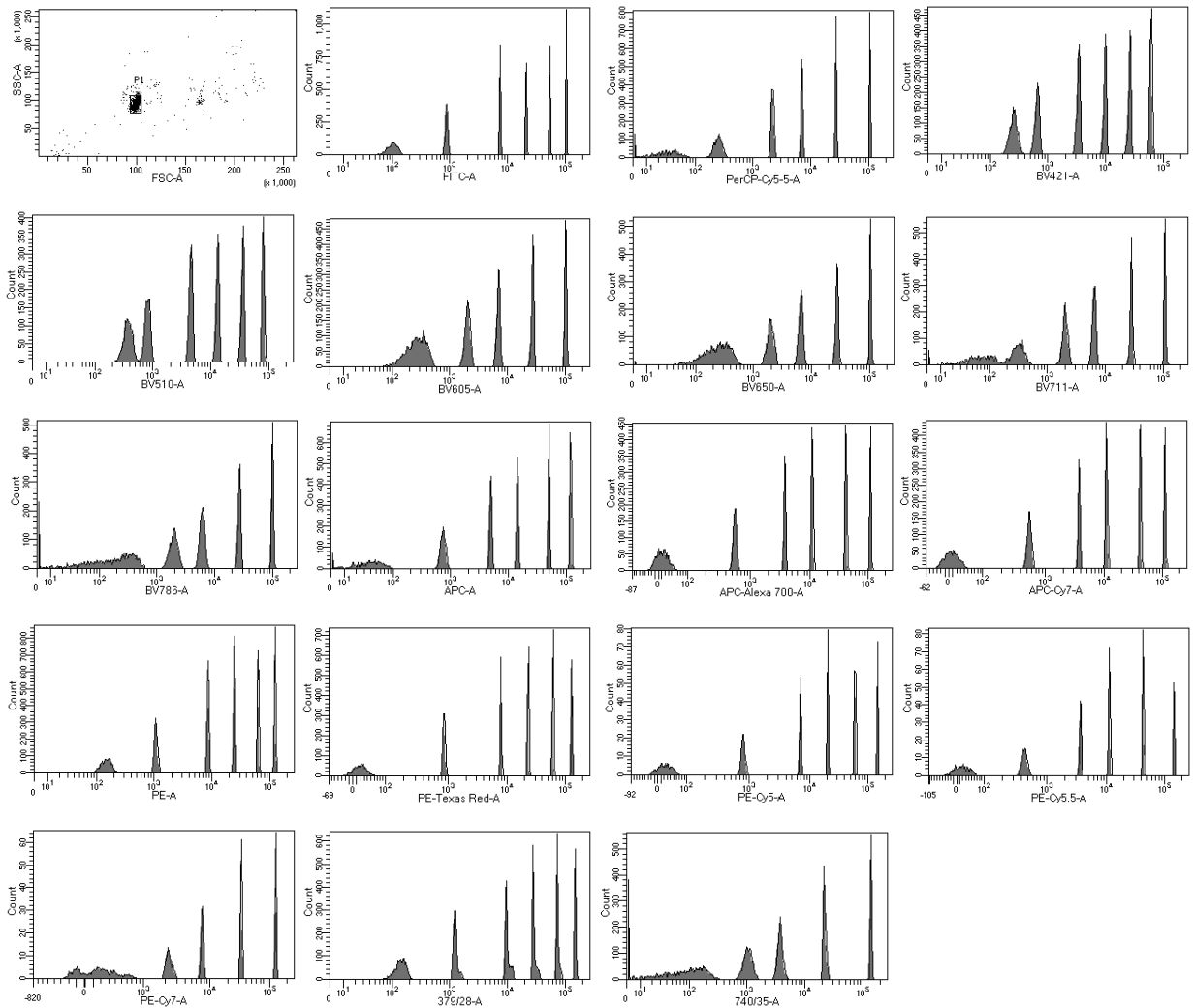
SPHERO™ Ultra Rainbow Calibration Particle Kits

- Consists of one bead with multiple fluorophores and intensities for calibration in all channels of the flow cytometer
- Designed for routine calibration and long term performance tracking
- Used to optimize the linearity, resolution and sensitivity
- Simplifies the calibration in the UV,Violet, and Far Red,

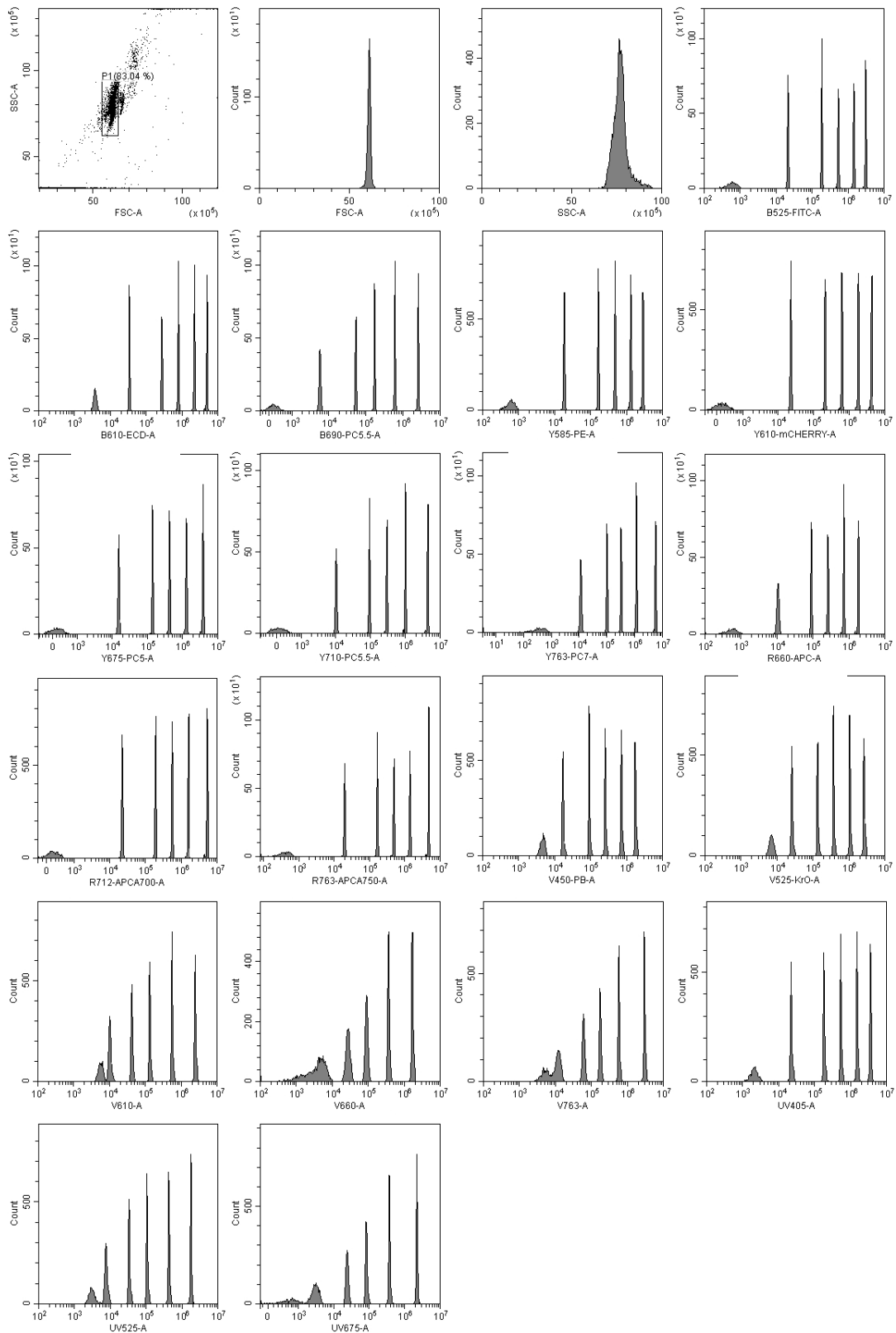
Particle Type and Surface	Size, μm	Catalog No.	Unit
Ultra Rainbow Calibration Kit, 6 peaks, $10^7/\text{mL}$	3.8 +/- 0.2	URCP-38-2K	2 mL
Ultra Rainbow Calibration Kit, 6 peaks, $10^7/\text{mL}$	3.8 +/- 0.2	URCP-38-20K	20 mL
Ultra Rainbow Calibration Kit, 6 peaks, $10^7/\text{mL}$	5.0-5.4	URCP-50-2K	2 mL
Ultra Rainbow Calibration, 3 peaks, $10^6/\text{mL}$	3.0-3.4	URCP01-30-10K	10x3mL
Ultra Rainbow Calibration, 6 peaks, $10^7/\text{mL}$	8.0-12.9	URCP-100-2	2 mL
Ultra Rainbow Calibration, 6 peaks, $10^7/\text{mL}$	8.0-12.9	URCP-100-6K	6x2mL
Ultra Rainbow Calibration, 9 peaks, $10^7/\text{mL}$	8.0-12.9	URCP-100-2	2 mL

A set of calibration particles, **Ultra Rainbow Calibration Particles**, are now available for performance tracking of flow cytometers with fluorescent channels in the UV to Far Red. The **Ultra Rainbow Calibration Particle Kits** are available in either 3.8 μm , 5.1 μm , or 10 μm . The **Ultra Rainbow Calibration Particles** have improved resolution in the UV, PE-Cy7, APC, and APC-Cy7 channels.

Flow Cytometry
Linearity & Sensitivity

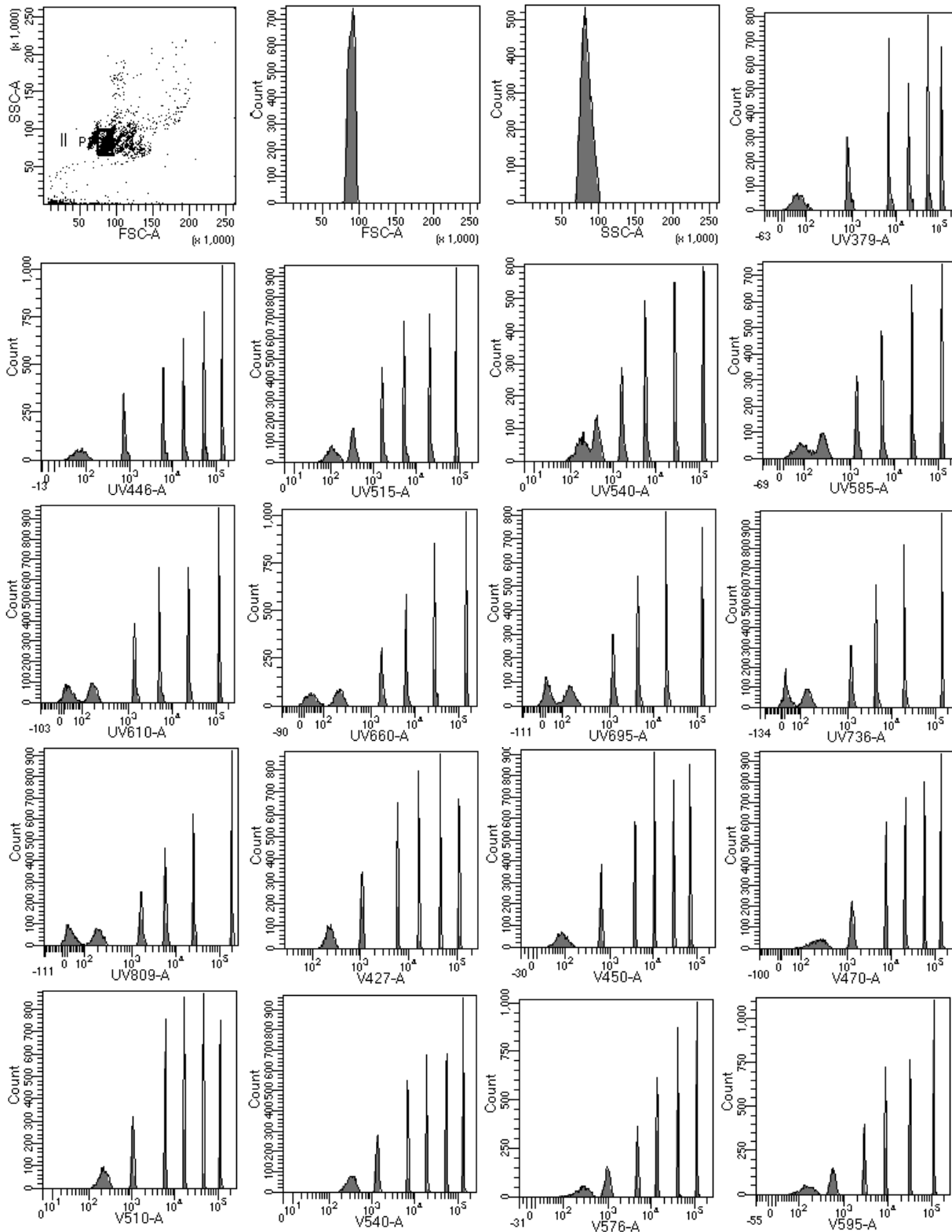


Histogram of URCP-38-2K from a BD Bioscience LSRFortessa™ X-20

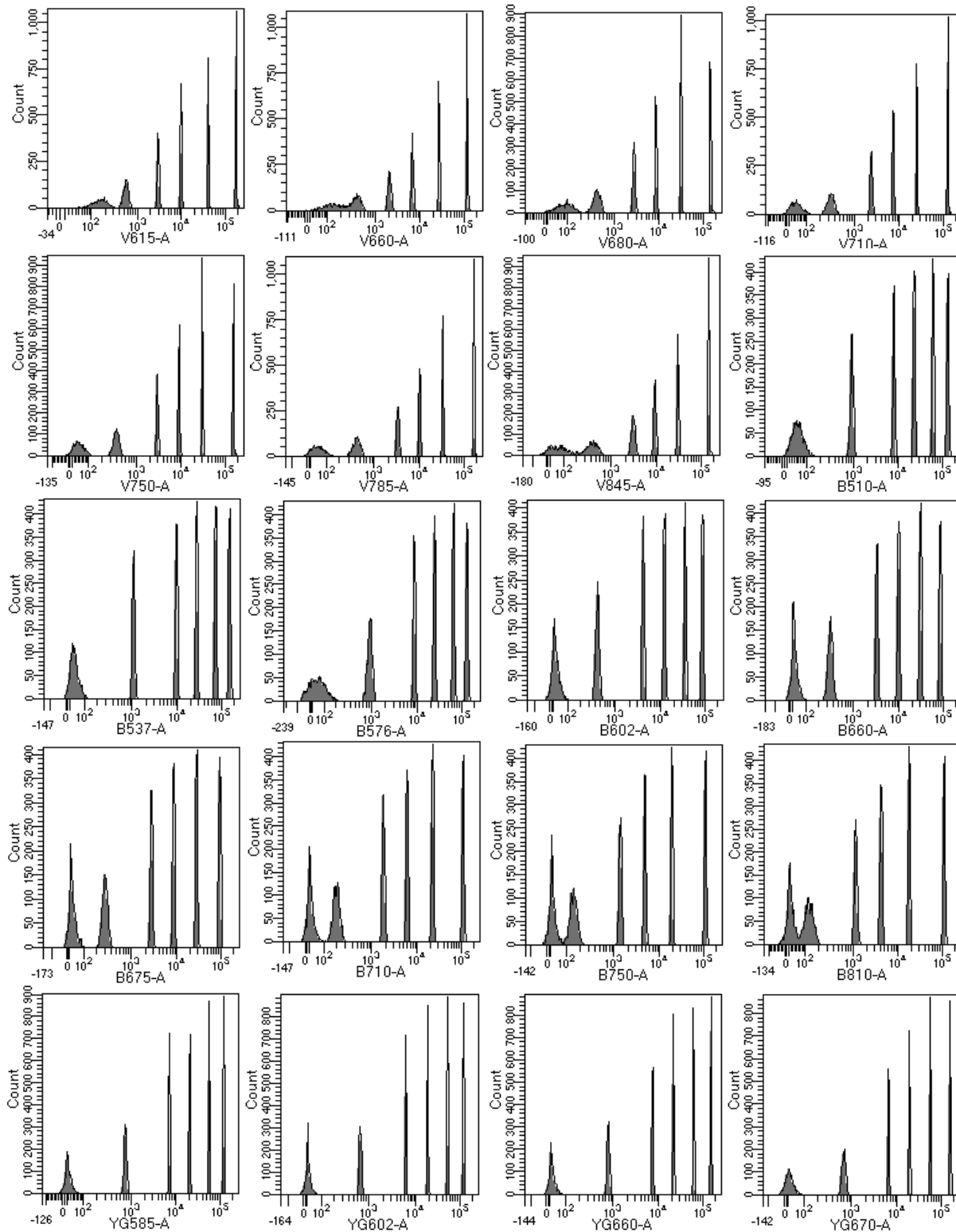


Dot plot and histogram of URCP-38-2K from a Beckman Coulter CytoFLEX LX

Flow Cytometry
 Linearity & Sensitivity

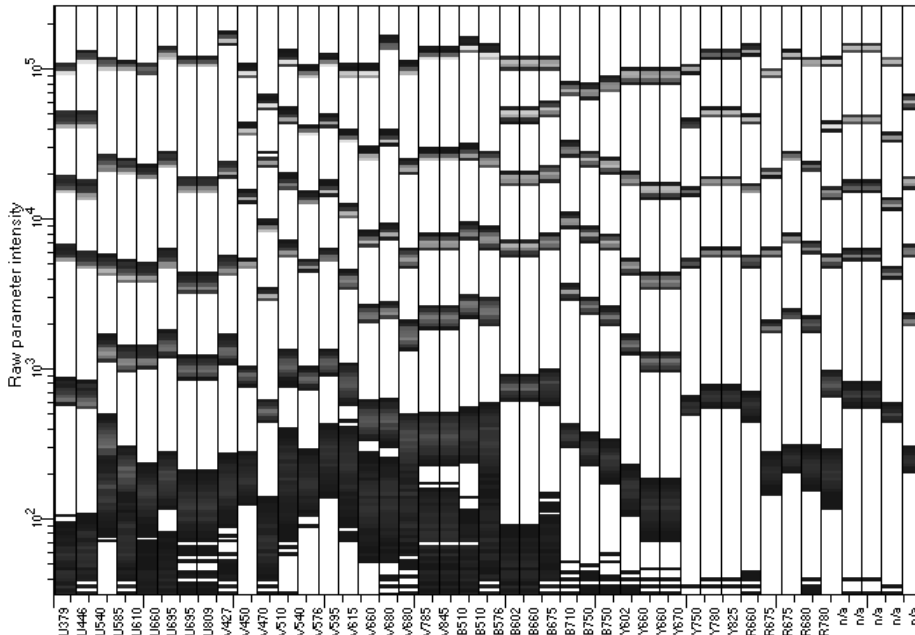
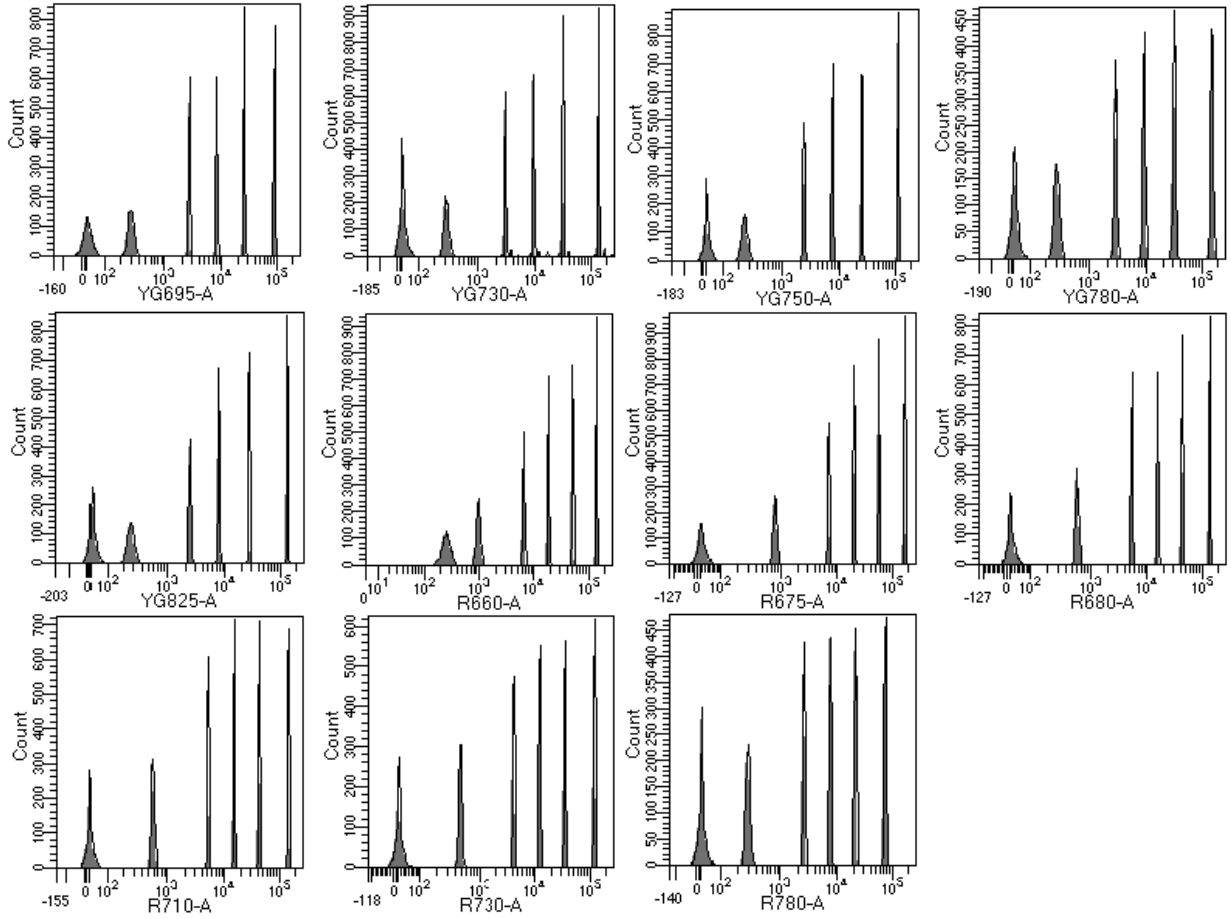


Dot plot and histograms of URCP-38-2K on a BD FACSymphony™ A5 SE page 1

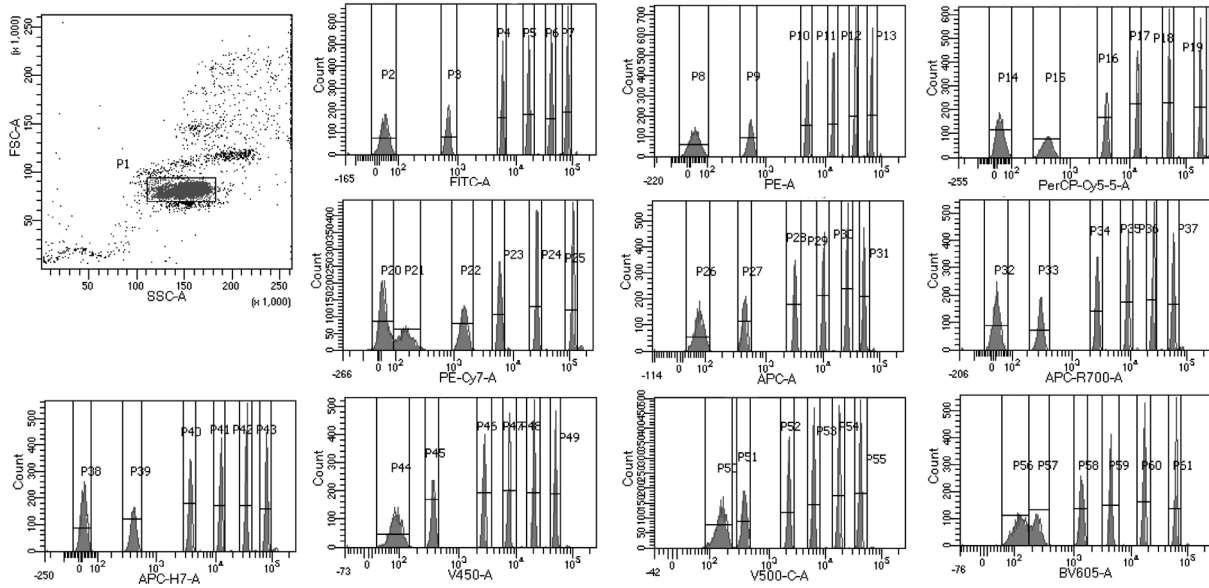


Flow Cytometry
Linearity & Sensitivity

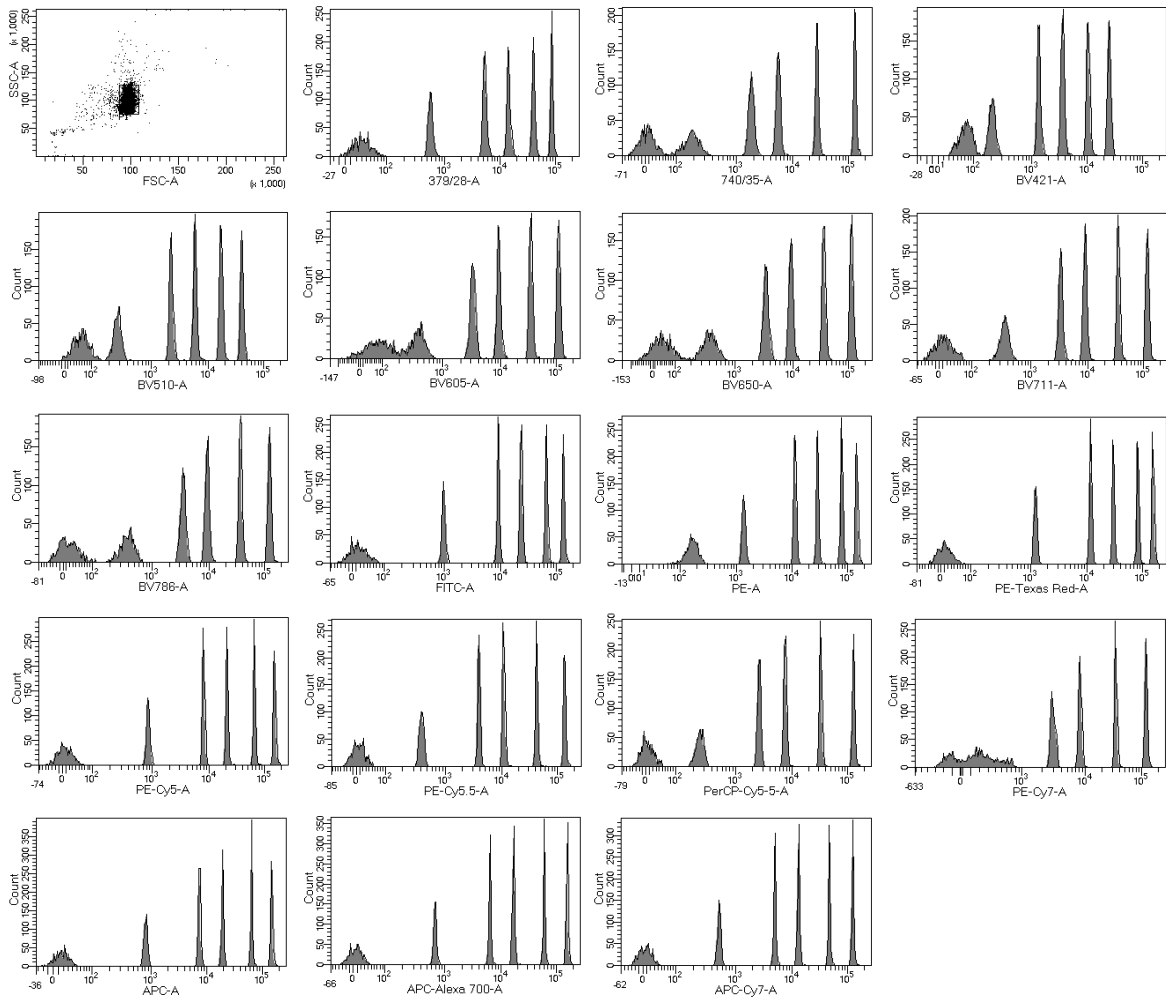
Dot plot and histograms of URCP-38-2K on a BD FACSymphony™ A5 SE page 2



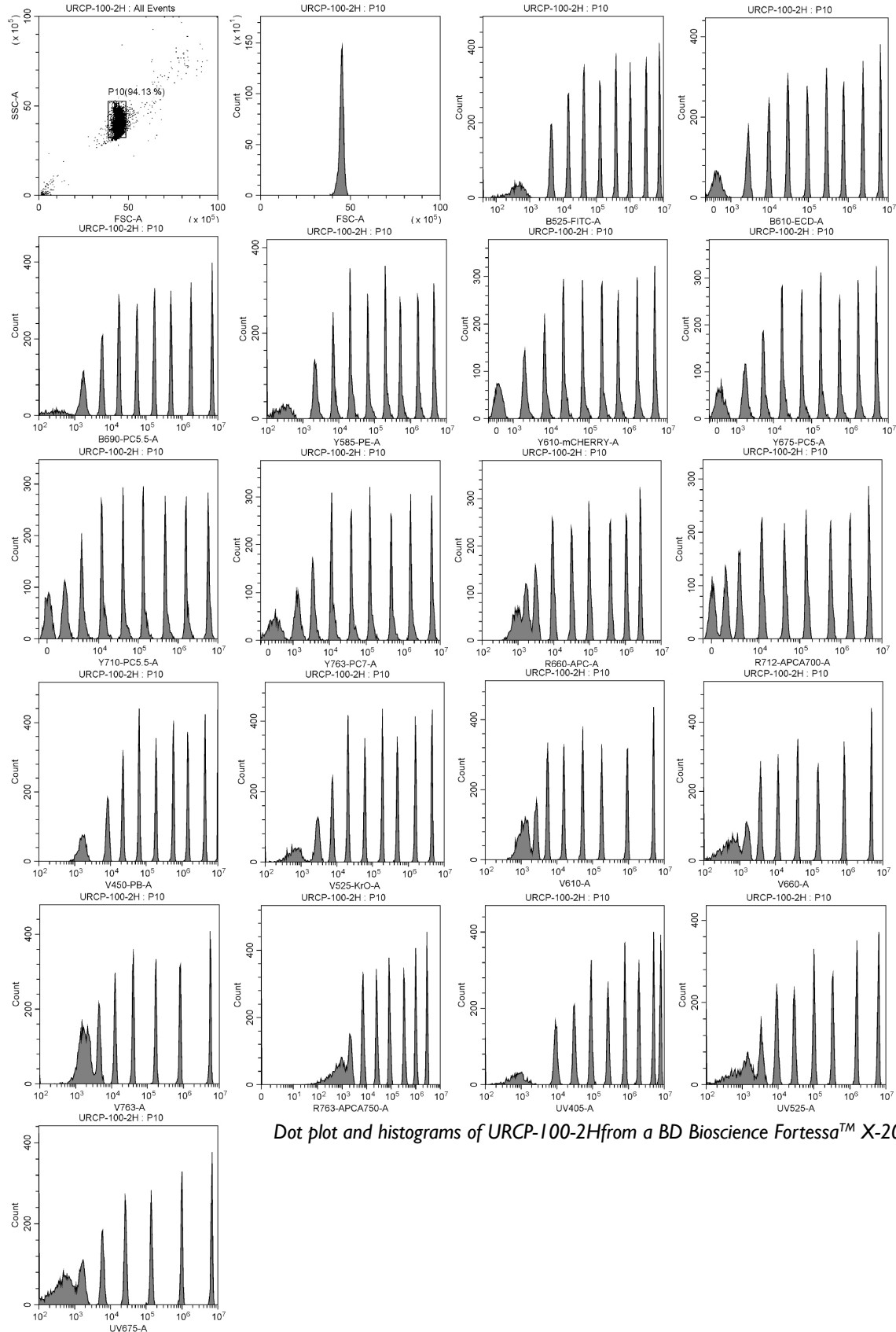
Dot plot and histograms of URCP-38-2K on a BD FACSymphony™ A5 SE page 3



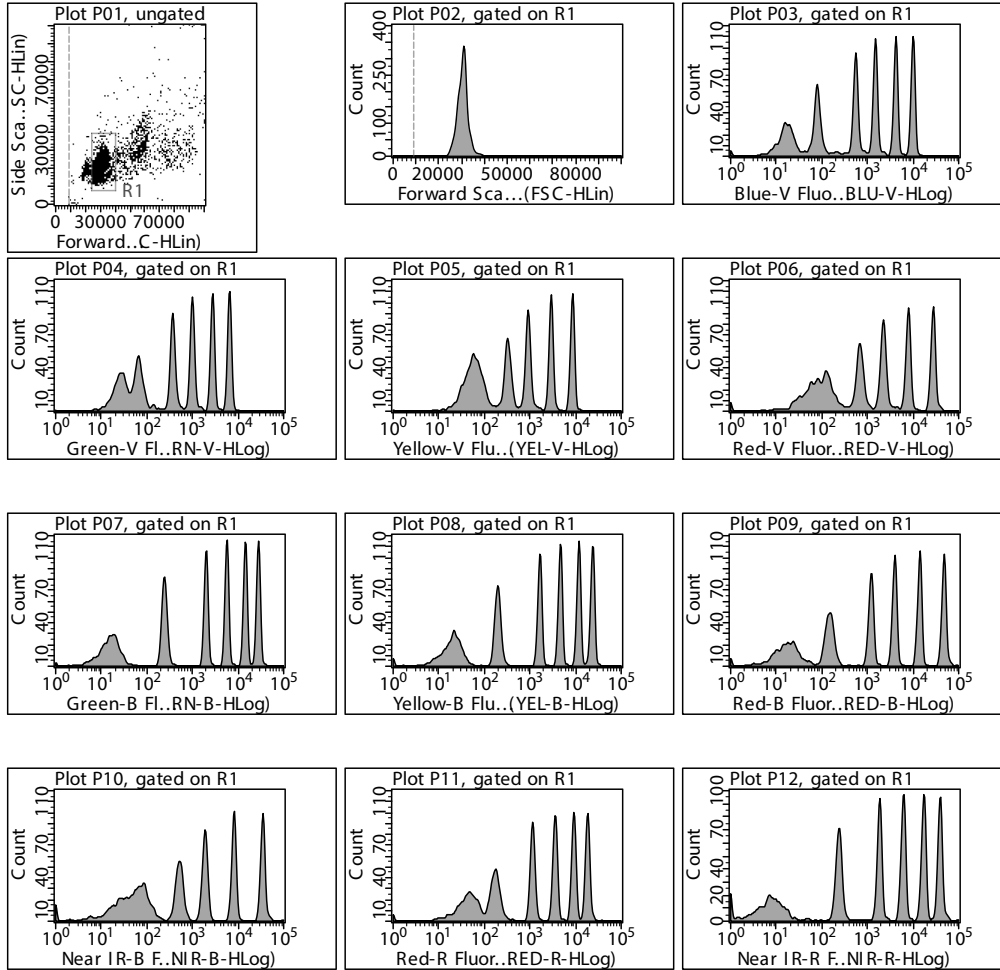
Dot plot and histogram of URCP-38-2K from a 10 Color FacsCanto from BD



Dot plot and histogram of URCP-50-2K from a BD Bioscience LSRFortessa™ X-20



Dot plot and histograms of URCP-100-2H from a BD Bioscience Fortessa™ X-20



Dot plot and histogram of URCP-38-2K from a Guava easyCyte 12

Flow Cytometry
Linearity & Sensitivity

SPHERO™ Ultra Rainbow Calibration Particles
 One Bead, Multiple Intensities Calibrating all Channels

- Designed for routine calibration of the flow cytometer in all channels
- Optimizes the linearity, sensitivity, and resolution of the flow cytometer
- Simplifies the calibration of multiple laser flow cytometers including Far Red, Violet, and UV channels

Spherotech
 Let the Possibilities Flow